



Omme lift

Top safety with
this handy
electro-hydraulically
operated lift

Type 2100 E
Trailer-mounted



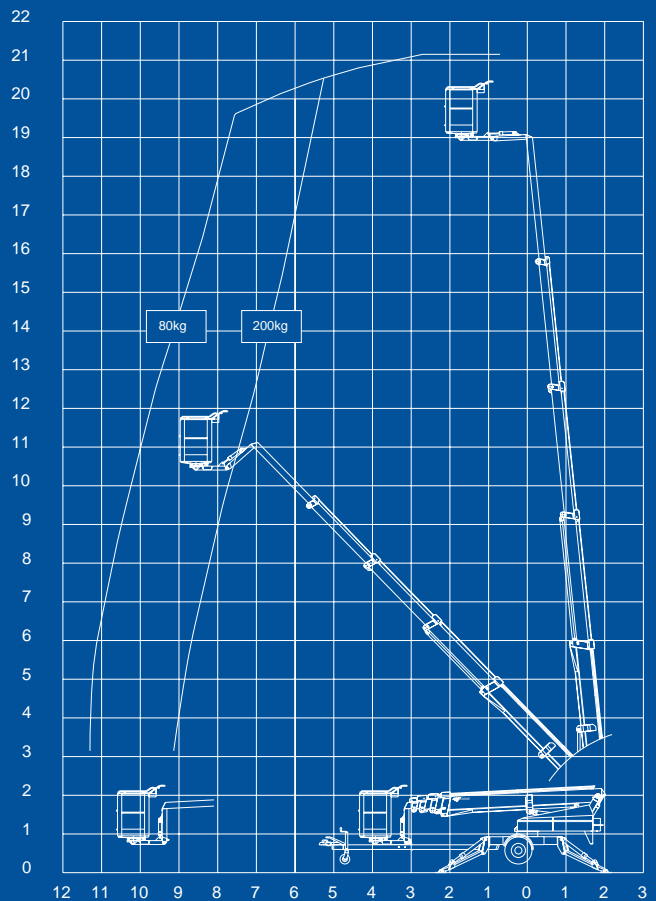
SAFE ACCESS - made of steel

Technical data: **2100 EZ** **2100 EBZ** **2100 EBDZ**

Trailer-mounted Trailer-mounted Trailer-mounted

Max. working height	21.1 m	21.1 m	21.1 m
Max. outreach	11.1 m	11.1 m	11.1 m
Max. basket load	200 Kgs.	200 Kgs.	200 Kgs.
Rotation	± 400°	± 400°	± 400°
Turnable basket	1.25 x 0.8 x 1.1 m (2 x 41° electrical)		
Power supply	230 V / 16 Amp.	Battery	Battery / Diesel
Battery		4 x 6 V / 240 Ah	4 x 6 V / 240 Ah
Charger		20 Amp	20 Amp
Diesel Engine			14k W / 18,8 HP
Generator			24 V / 22 Amp
Travelling length	7.35 m	7.35 m	7.66 m
Travelling height	2.10 m	2.10 m	2.10 m
Travelling width	1.70 m	1.70 m	1.70 m
Operational width	4.25 m	4.25 m	4.25m
Total weight	2335 Kgs.	2400 Kgs.	2680 Kgs.
230 V outlet in basket	+	+	+
Hydraulic stabilizers	+	+	+
Proportional controls	+	+	+
Propulsion	0	0	0

+ Standard
O Options



A stable lift – also during transport



2100 EZ, 2100 EBZ and 2100 EBDZ

are identical apart from their power sources. Standard features include hydraulic stabilizers with interlocks, basket rotation and proportional controls with dual controls to ground and basket. Design features include a basket mounting that forms a “fly” boom mounted to the top boom section and gives increased outreach over obstacles. The specially designed steel booms made from high and broad profiles allow greater outreach whilst maintaining a high degree of stability and rigidity. Being shorter in travel length than most machines of this type, the 2100 E-series allows improved manoeuvrability and is particularly suited when mounted on to a chassis cab.

2100 EZ is mains powered 230V/ 16 Amp and is especially suitable, where continuous or extended operation is required.

2100 EBZ is powered by a heavy duty 24 V battery pack with built-in charger capable of charging the batteries whilst the platform is in use.

2100 EBZ is especially suited for jobs, without mains access.

Hydraulic propulsion (option)

OMME access platform type 2100 E can be equipped with propulsion powered by the hydraulic system of the access platform and controlled through a delicate hydraulic valve operated from a special drive station platform that provides the operator overall visibility of the machine.

When equipped with this option the platform can propel itself around the work site.

2100 EBDZ has dual power option battery- and diesel engine especially suited for internal use for all types of jobs and outdoor use. During operation with diesel engine the batteries are recharged by the generator of the engine. The lift can also be delivered with dual power option battery- and petrol engine (EBPZ).

OMME LIFT A/S

Lægårdsvej 4 - DK-7260 Sdr. Omme

Tel. +45 75 34 13 00 - Fax +45 75 34 15 92

www.ommelift.dk

OMME
Lifts – all kinds